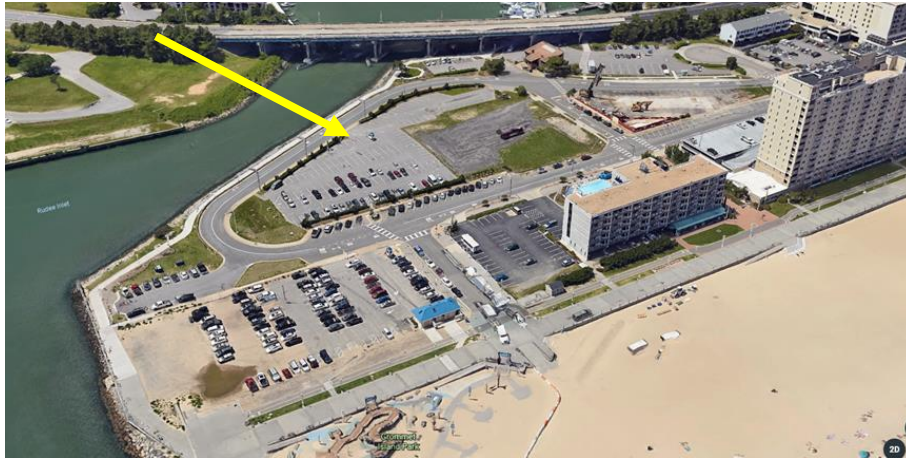


DRIVE ON

All vendors will be assigned a drive-on date and time. Missing your assigned drive-on time may result in not being able to set up your operation, not receiving important documents, passes, and city/fire/health department approval to operate. Missing your assigned drive-on time will also affect your acceptance into future events. **Be advised that you are only permitted ONE vehicle for drive-on.**

DRIVE ON STARTING LOCATION:

Rudee Loop Municipal Lot (104 Atlantic Avenue, Virginia Beach, VA 23451) at the South end of Atlantic Avenue.



This parking lot will open 1.5 hours prior to the departure time. Please ensure you arrive at the lot at least 30 minutes prior to your drive on time to receive final instructions, passes, and documents for the weekend.

Upon arrival at the parking lot, vendors will be given directions, an access permit, and lined up in order of your site number.

You will be assigned a drive-on date and time.

Lines of vendors, with escorts, will leave the parking lot at the following times:

- Wednesday, September 25 - 1:00PM
- Wednesday, September 25 - 4:00PM
- Thursday, September 26 - 10:00AM
- Thursday, September 26 - 5:00PM

LARGE OPERATIONS WILL ONLY BE BROUGHT ONTO THE BOARDWALK WEDNESDAY, SEPTEMBER 25, 2024.

NO EXCEPTIONS. PLAN ACCORDINGLY. Large Operations are defined as, but not limited to, food trucks, food or non-food trailers, 20'x10' or larger operations deemed by Neptune Festival Management to be a "large operation".

Vendors have 1 HOUR to unload items/products and remove your vehicle from the boardwalk. (The setup of your booth should occur *after* your vehicle is moved.)

All vendors will leave assembly and head north on Atlantic Avenue with vehicle hazard lights turned on. Turn right onto the 10th Street access toward the boardwalk, then left onto the boardwalk, escorted by Festival Security on golf carts. Vendors will continue North until reaching their booth space.

If a vendor must unload from the passenger side of their vehicle and access the boardwalk from North to South, please communicate this to the festival upon acceptance, so we can prepare for your arrival. **This will require you to arrive at least 30 minutes earlier than the scheduled drive on time.**

DRIVE OFF

Breaking down and leaving the Boardwalk at the end of the Festival is the more challenging period, and one that is potentially dangerous. The Festival will have staff and security personnel onsite to ensure you have the assistance you need to exit the boardwalk safely.

The access (stub) streets will be barricaded and closed to oncoming traffic. Access will be authorized beginning at 6:00PM, under the direction of Festival staff and security. Any vehicle brought onto a stub street or onto the Boardwalk prior to that point **will be removed at the owner's expense.**

At 6:00PM on Sunday, September 29, 2024, the Festival ends, and breakdown begins.

SMALL OPERATIONS (defined as 10' X 10' or smaller) may pack up their operations and request Boardwalk access from the security/staff member assigned to their block. When given this access, they may then bring their vehicle onto the Boardwalk to the **nearest access South of their operation.**

At this point, they may load their vehicle, strike their operation, and **exit to the nearest access North of their operation.**

LARGE OPERATIONS may begin breakdown at 6:00PM but may *not* request a Boardwalk pass prior to 7:30PM. At that time, they may request a pass and (when issued) bring their vehicle onto the Boardwalk, load, strike their operation, and be **escorted from the Boardwalk to the nearest access North of their operation.**

Large operations that must enter the boardwalk from North to South, may begin breakdown at 6:00PM, but may not request access to the boardwalk prior to 8:00PM.

NO VEHICLE MAY BE BROUGHT ON THE BOARDWALK WITHOUT THE APPROPRIATE PASS AND PERMISSION.

THIS PROCEDURE WILL BE STRICTLY OBSERVED.

PLEASE WORK WITH US TO ENSURE THE PROGRAM WORKS SMOOTHLY AND SAFELY FOR EVERYONE.